

The needed paradigm shift in healthcare

PERMACRISIS

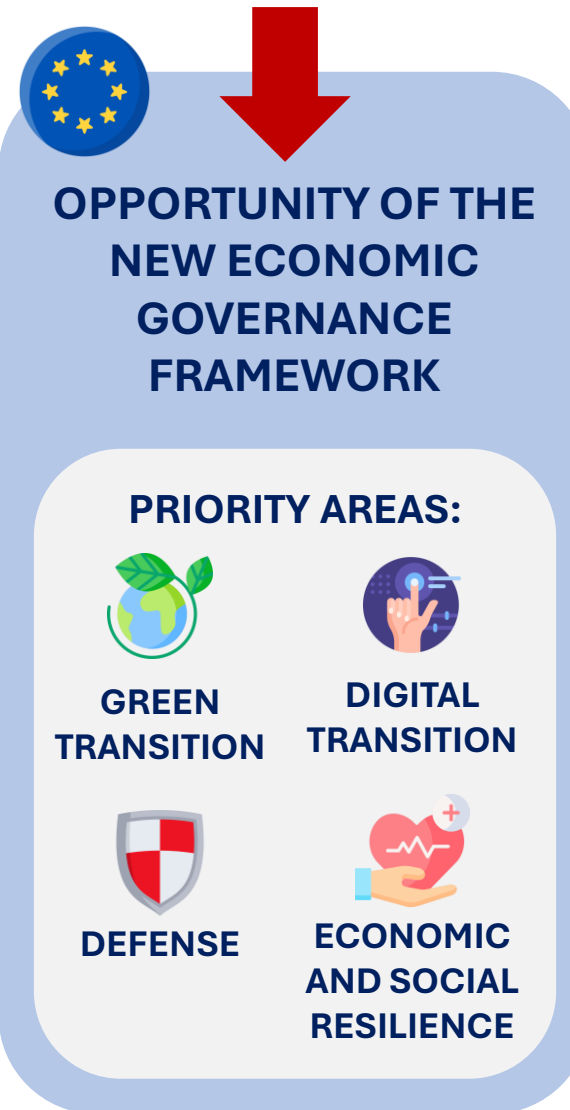
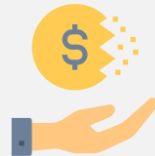
SLOW GROWTH

**DEMOGRAPHIC
TRANSITION**

**INCREASED
BURDEN
OF DISEASES**

**CLIMATE
CHANGE**

**INCREASED
BURDEN AND
PRESSURE ON
PUBLIC
FINANCES AND
NATIONAL
HEALTHCARE,
SOCIAL CARE
AND WELFARE
SYSTEMS**



**NEED FOR
INCREASED
INVESTMENT IN
PREVENTION
– IMMUNISATION IN
PARTICULAR – BY
LEVERAGING ON
THE NEGF**

